

Operating Instructions

Bromic Soldering Iron

**SUITED TO D.I.Y SOLDERING
APPLICATIONS**

ELECTRICAL

25W, 40W & 80W*



CAUTION

Important: Read these instructions carefully before use. Familiarize yourself with the Electric Solder Iron before connecting it to power. Keep these instructions for future reference.

THE SOLDER IRON MUST BE USED IN ACCORDANCE WITH THE FOLLOWING:

- The soldering tip is hot and can cause serious burns
- Disconnect from power socket after use
- Use safety glasses when soldering
- Soldering irons reach a high temperature during operation and should be handled with extreme care so as to reduce the risk of fires or burns
- The soldering iron's heating element may smoke slightly during the first 10-minutes of use as it dries; this is normal
- Never file the specially-plated tip



SAFETY WARNINGS



1. The appliance is not a toy, and must be kept out of children's hands.
2. Before cleaning the appliance or changing the filter, always remove the power lead plug from the socket. Unscrewing the housing is not permitted.
3. This appliance is not intended for use by persons (including children) with reduced physical, sensory or mental capabilities, or lack of experience and knowledge, unless they have been given supervision or instruction concerning use of the appliance by a person responsible for their safety.
4. Children should be supervised to ensure that they do not play with the appliance.
5. If the supply cord is damaged, it must be replaced by the manufacturer, its service agent or similarly qualified persons in order to avoid a hazard.

APPROVAL:**SAA-151950-EA approval for Electrical Equipment (25W and 40W)**

AS/NZS 60335.2.45:2012; AS/NZS 60335.1:2011 standards

SAA-151950-EA approval for Electrical Equipment (80W)

AS/NZS 60335.2.45:2012; AS/NZS 60335.1:2011 standards

MAINTENANCE:

If the power cord is damaged in any way, it must be replaced immediately by a service agent or suitably qualified person.

TIP REPLACEMENT & DRESSING:

Note: Tip replacement or cleaning should only be done when the iron is at room temperature. The tip can be changed or replaced by unscrewing the knurled nut barrel assembly. It is essential that the iron is switched off and allowed to cool before and after this operation, as damage may result if the iron is left on without the tip inserted. After removing the tip, blow out any remaining oxide dust that may have formed in the tip retaining area of the barrel. Care should be taken to avoid getting dust in your eyes. Replace the tip and tighten the knurled nut barrel assembly using only hand pressure. Pliers should only be used to tighten the nut if loosening occurs when the iron is hot. Care should be taken not to over tighten the nut, as this may damage the element.

GENERAL CLEANING:

The iron may be cleaned with a damp cloth using small amounts of liquid detergent. Never submerge the iron in liquid or allow any liquid to penetrate the case.

KEEP OUT OF REACH OF CHILDREN**POWER SUPPLY:**

240V AC

Output: 25W, 40W or 80W*

Cable Length: 1.35m

Applications:

20W and 40W (ceramic heat element): Radio controls, hobbies and crafts, small electrical parts
80W model (*Mica heat element): Household electrical appliances, capacitors and heavy-duty soldering applications requiring more heating power.

SOLDERING IRON

ELECTRICAL 25W, 40W & 80W



Fast-heat ceramic element reduces wait time



Iron-clad, chrome-plated long life tip



Heat resistant handle with anti-slip grip



Resting stand included

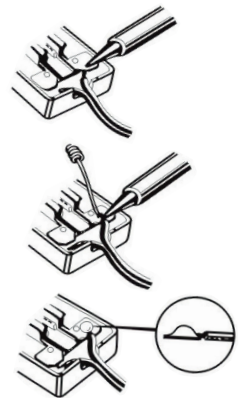
Lightweight and compact design

HOW TO SOLDER:

1. File off any dirt, rust or paint on the part you wish to solder.
2. Heat the part with the electric soldering iron.
3. Apply rosin-based solder to the part and allow the heated surface to melt solder, forming a solid connection.

Note: When using non-rosin based solder, be sure to apply a soldering flux paste to the part before applying solder.

4. Wait for the solder to cool and harden before moving the soldered part.





A member of the Bromic Group

HEAD OFFICE
10 Phiney Place, Ingleburn NSW
2565 Australia

T : 1300 276 642
NZ : 05 08 276 642

F: 1300 735 115

W: www.bromic.com.au

E: plumbing@bromic.com.au

BROMIC.COM.AU