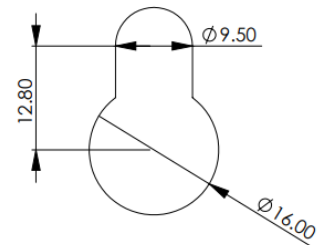
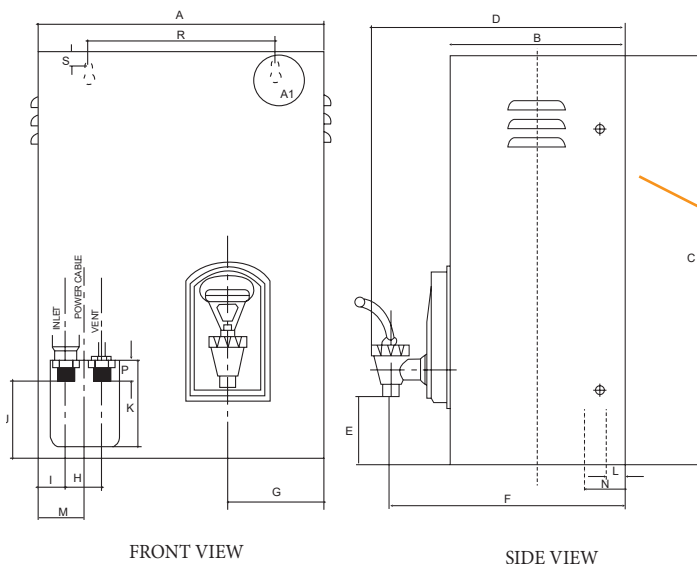


Instant Boiling Water Dispensers

- **Instant Access to Boiling Water**
 - + Eliminates the wait time for boiling water, enhancing deficiency.
- **Consistent Water Temperature**
 - + Optimised boiler operation according to water usage, ensuring a stable water temperature without sudden changes.
- **Energy Efficient**
 - + Step-by-step heating gradually heats the water based on demand, avoiding the energy waste of heating an entire tank.
- **Space Saving**
 - + Wall-mounted design saves counter space and provides a sleek, modern look.
- **Safety**
 - + Features dual over-temperature protection to ensure user safety.
- **Easy to use**
 - + Simple lever dispenses instant boiling water.
- **High Capacity**
 - + Suitable for environments with high demand for hot water, with varying capacities to meet different needs.
- **Longer Lifespan**
 - + The step-by-step heating avoids frequent heating and cooling cycles, reducing wear and tear, and extending the lifespan of the water heater.
- **Direct Bottom Inlet Water Heating**
 - + The heating element directly heats the inlet water, providing greater efficiency compared to reheating previously heated water.
- **Installation Guide**
 - + Easy to use installation guide included on back of box.
- **Copper Tank**
 - + Increases durability and efficiency. Copper tanks heat transfer and more evenly, improving energy efficiency and stable hot-water output. Cooper's antimicrobial and corrosion-resistant properties help keep water hygienic and extend service life.



Dimension Specifications



DETAIL A1
ENLARGED MOUNTING HOLE

DIMENSION (mm)																
Model	A	B	C	D	E	F	G	H	I	J	K	L	M	N	P	S
2.5L	275	165	365	263	82	243	110	33	28	95	93	18	49	45	20	198
5L	320	195	448	293	82	273	110	33	28	95	93	18	49	45	20	198
7.5L	320	195	448	293	82	273	110	33	28	95	93	18	49	45	20	198

Specifications

Bromic Instant Boiling Water Dispensers	2.5L	5L	7.5L
Product No.	2850205	2850215	2850225
Application	For the supply of instant boiling water to commercial kitchens, office break rooms, staff kitchens, canteens and hospitality environments.		
Warranty	2 Years	2 Years	2 Years
WaterMark (Lead-free compliant)	WM-040339	WM-040339	WM-040339
Storage capacity	2.5L	5L	7.5L
Max. Water Supply Pressure (kPa)	800	800	800
Min. Water Supply Pressure (kPa)	50	50	50
Cold Water Connection	1/2" BSP	1/2" BSP	1/2" BSP
Overflow Vent Connection	1/2" BSP	1/2" BSP	1/2" BSP
Supply Voltage	220 – 240 Volts AC 50 Hz	220 – 240 Volts AC 50 Hz	220 – 240 Volts AC 50 Hz
Electrical Connection	10A 3pin plug	10A 3pin plug	10A 3pin plug
Heating Element (kW)	1.8	2.0	2.0
Approx. Weight Empty (kg)	6.6	8.5	8.7
Approx. Weight Full (kg)	10.7	16.3	18.3
Approx. Time to Heat, to full capacity (mins)	12	15	22
Width (mm)	275	320	320
Height (mm)	365	448	448
Depth (to lever) (mm)	263	293	293



V21 09/2025

